

<b>Product Number:</b>	104465
<b>Lot Number:</b>	504417
<b>Expiration:</b>	12-Feb-2026
<b>Platform(s):</b>	HD-X



*Data below represents results generated on the Simoa® HD-X Analyzer.*

Component	Part Number	Lot Number
Bead Reagent	104448	422702
Detector Reagent	104450	422715
SBG Reagent	104452	422716
Calibrator Diluent Reagent	104453	422627
Plasma Sample Diluent Reagent	104647	422523
CSF Sample Diluent Reagent	104648	422522
Control Diluent Reagent	104649	422626
Calibrator Concentrate	104466	402940
Control 1 Concentrate	104468	402941
Control 2 Concentrate	104469	402942
RGP 2.0 Reagent	104321	N/A <sup>1</sup>
Activation Buffer Reagent	104324	N/A <sup>1</sup>

<sup>1</sup> Reagents are not Kit Lot Specific

Review/Approval

*Kyle Giroux*

*Senior Document Control Specialist, QA*

*Kyle Giroux 04 Dec 2024*

Name

Title

Signature/Date

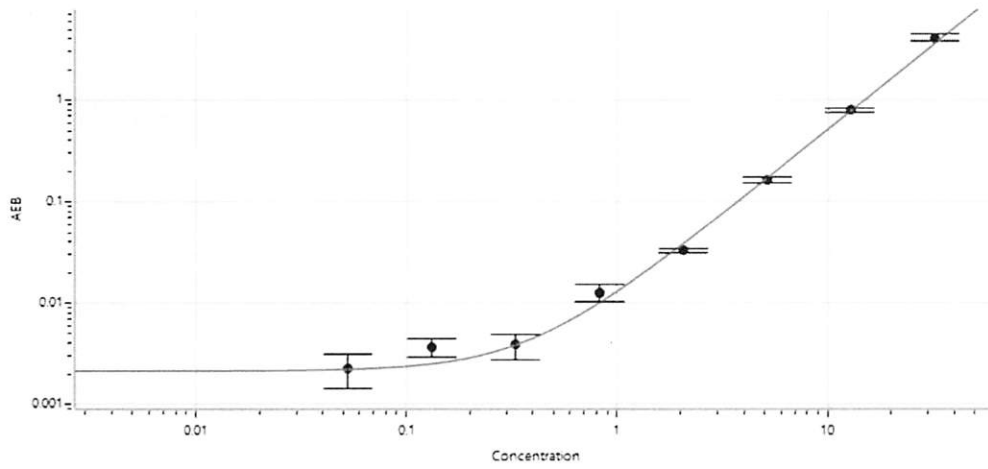
**Release Materials\***

**Abeta 40**

	Lot	Result (pg/mL)	Spec. Range (pg/mL)
<b>Control 1</b>	402941	4.08	2.23 - 5.64
<b>Control 2</b>	402942	63.1	38.6 - 71.7

<b>Calibrator Concentrate Reconstitution Volume (uL)</b>	1144
<b>Control 1 Concentrate Reconstitution Volume (uL)</b>	1144
<b>Control 2 Concentrate Reconstitution Volume (uL)</b>	1144

**Calibration Curve**



**Calibrator Levels (pg/mL)**

A	0.000
B	0.053
C	0.132
D	0.330
E	0.824
F	2.06
G	5.15
H	12.8
I	32.2

**Release Materials\***

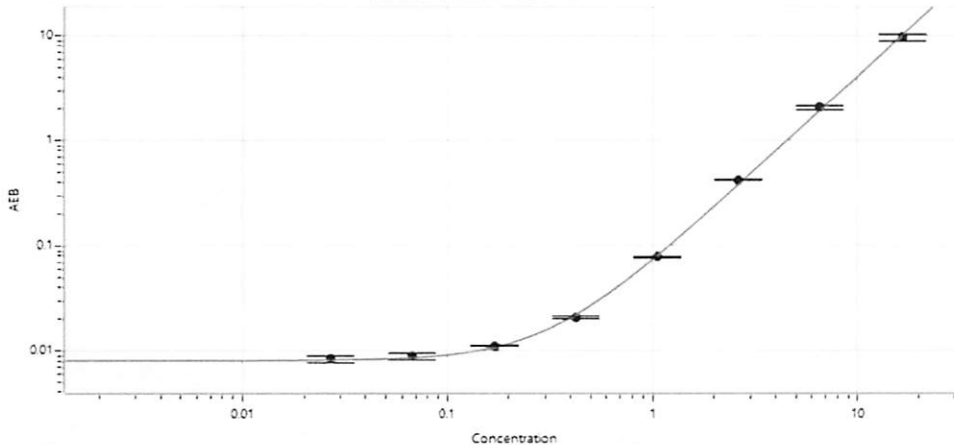
**Abeta 42**

	Lot	Result (pg/mL)	Spec. Range (pg/mL)
<b>Control 1</b>	402941	1.49	1.01 - 2.10
<b>Control 2</b>	402942	29.7	17.9 - 33.3

\* Ranges shown are generated internally for new lot release only. Customer should generate their own control ranges.

<b>Calibrator Concentrate Reconstitution Volume (uL)</b>	1144
<b>Control 1 Concentrate Reconstitution Volume (uL)</b>	1144
<b>Control 2 Concentrate Reconstitution Volume (uL)</b>	1144

**Calibration Curve**



**Calibrator Levels (pg/mL)**

A	0.000
B	0.027
C	0.067
D	0.169
E	0.422
F	1.05
G	2.64
H	6.60
I	16.5

**Release Materials\***

**GFAP®**

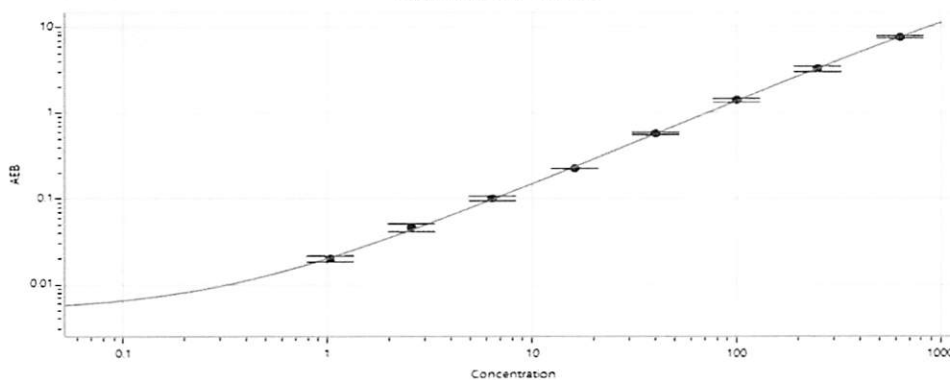
	Lot	Result (pg/mL)	Spec. Range (pg/mL)
<b>Control 1</b>	402941	92.2	60.2 - 115
<b>Control 2</b>	402942	1094	771 - 1431

<b>Calibrator Concentrate Reconstitution Volume (uL)</b>	1144
<b>Control 1 Concentrate Reconstitution Volume (uL)</b>	1144
<b>Control 2 Concentrate Reconstitution Volume (uL)</b>	1144

**Calibrator Levels (pg/mL)**

<b>A</b>	0.000
<b>B</b>	1.03
<b>C</b>	2.57
<b>D</b>	6.42
<b>E</b>	16.1
<b>F</b>	40.1
<b>G</b>	100
<b>H</b>	251
<b>I</b>	627

**Calibration Curve**



**Release Materials\***

**NF-Light®**

	Lot	Result (pg/mL)	Spec. Range (pg/mL)
<b>Control 1</b>	402941	79.4	54.4 - 108
<b>Control 2</b>	402942	1082	731 - 1358

\* Ranges shown are generated internally for new lot release only. Customer should generate their own control ranges.

<b>Calibrator Concentrate Reconstitution Volume (uL)</b>	1144
<b>Control 1 Concentrate Reconstitution Volume (uL)</b>	1144
<b>Control 2 Concentrate Reconstitution Volume (uL)</b>	1144

**Calibrator Levels (pg/mL)**

<b>A</b>	0.000
<b>B</b>	0.885
<b>C</b>	2.22
<b>D</b>	5.53
<b>E</b>	13.8
<b>F</b>	34.5
<b>G</b>	86.4
<b>H</b>	216
<b>I</b>	540

**Calibration Curve**

